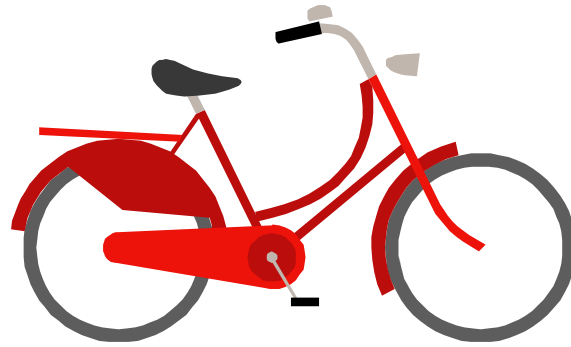


BI -means TWO

bicycle



biathlete

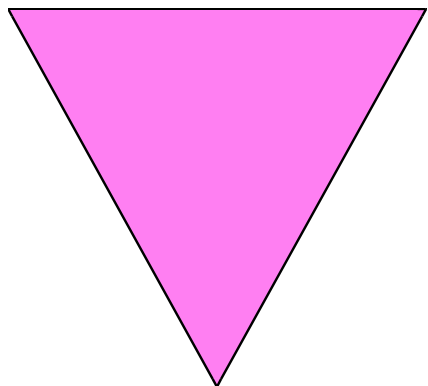


TRI -means THREE

tricycle



triathlete



triangle

NON -means NOT

nonsense



nonthreat

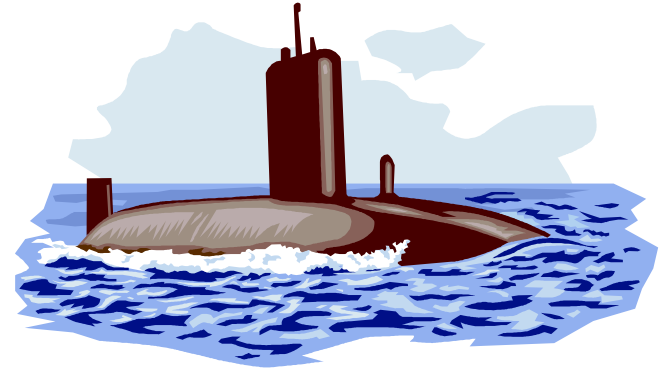


nonallergic



SUB -means UNDER BELOW

submarine



subway

-OUS means FULL OF



ridiculous

marvelous



-ITY/TY means STATE

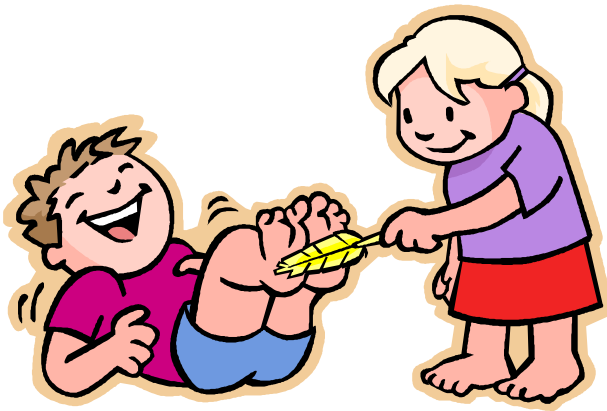
or QUALITY OF

sensitivity

creativity

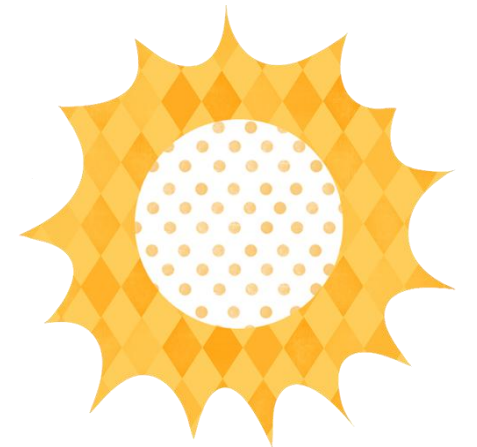


-ISH means QUALITY OF



ticklish clownish

yellowish



-WARD means **DIRECTION**

back**ward**



for**ward**



-ABLE means IS ABLE

dependable

acceptable

Words ending - *able* can often be divided into separate words that make sense

-IBLE means IS ABLE

accesssible

Most words with /s/ or /z/ sound take the *-ible* ending.